

SOLIDWORKS TRAINING COURSES SUMMARY

Exclusive from **IRIS HIGHTECH**, SOLIDWORKS Weldments Design course has been developed to deliver the power and potential of designers and to streamline the design and manufacture of welded structures, frames, and bases that form the backbone of products developed in many industries. Quickly create designs that have extrusions and generate cut lists and bills of materials needed for manufacturing. This training course accelerates the design process, saving time and development costs, and increasing productivity.

Weldments design course enables you to design a weldment structure as a single multibody part, sketching the basic framework, creating structural members with groups of sketch segments, and adding elements like gussets and end caps to complete the structure.

Pre-Requisites

- Knowledge of SOLIDWORKS and basic mechanical engineering concepts is recommended.
- The engineer should have basic knowledge on Structural Design

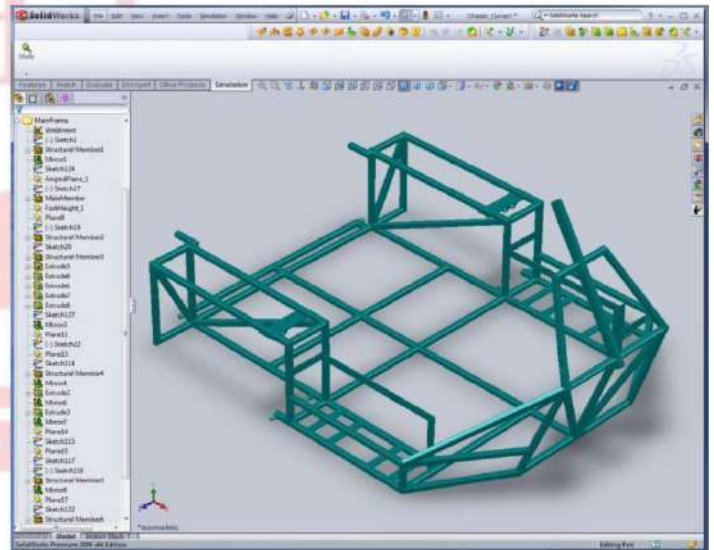
SOLIDWORKS Weldments Design Course Details

Introduction

- About This Course
- What is SOLIDWORKS?
- Introduction on SOLIDWORKS CAD
- Course Design Philosophy
- About the Training
- Build Model

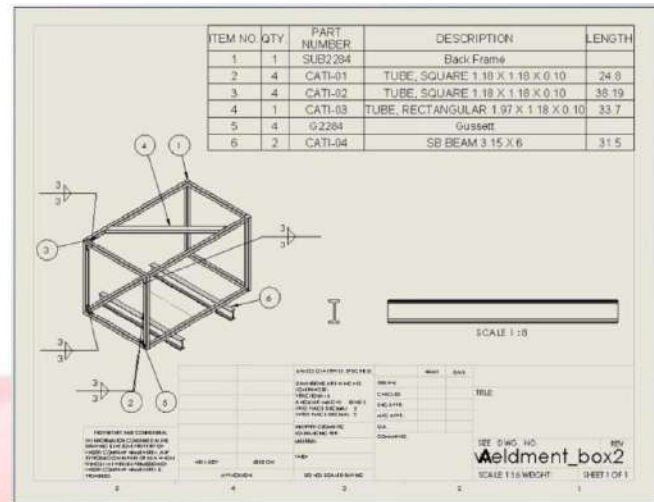
Weldment Features

- Weldment Feature
- Weldment Configuration Options
- Structural Members
- What is a Structural Member Profile?
- Weldment Profiles Folder Structure
- Groups
- Corner and Individual Corner Treatments
- Groups vs. Structural Members
- Trim/Extend Options
- Gussets and End Caps
- Gusset Profile and Thickness
- Locating the Gusset & End Cap Parameters
- Advantages and Limitations of a Multibody Part



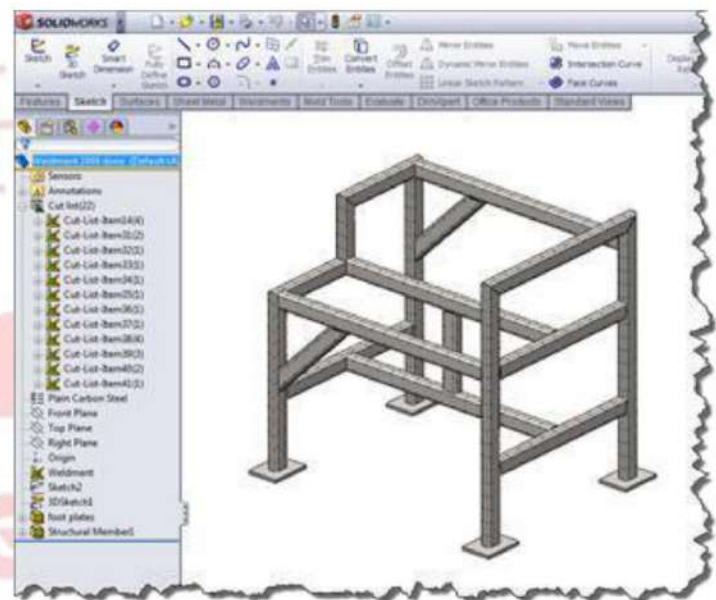
Configuring and Detailing Weldments

- Weldment Configurations
- Adding Configurations
- Post-Assembly Machining Features
- Weldment Drawings
- Drawing Views of Individual Bodies
- Select Drawing View Bodies
- Cut List Tables
- Representing Welds
- Weld Symbols



Working with Weldments

- Managing the cut list
- Cut List Item Names
- Cut List Properties Dialog
- Structural Members Properties
- Adding Cut List Properties
- Options for Generating Cut List Items
- Manually Managing Cut List Items
- Creating Sub-Weldments
- Custom Structural Member Profiles
- Defining Materials
- Standard or Configured Profiles
- Locate Part and Move/Copy Body
- Other Weld Annotations
- Fillet Beads
- Weld Bead Feature
- Weld Tables



NOTE: For More Details feel free to contact us

Ms. Shalu
training@irishightech.com
 011 48175000, 9999664283